

Last Unit Remaining



The Hanover Retail Collection
4 Medici Courtyard, Mayfair W1

Hanover.

Hanover.



Step into Mayfair, home to the finest global brands

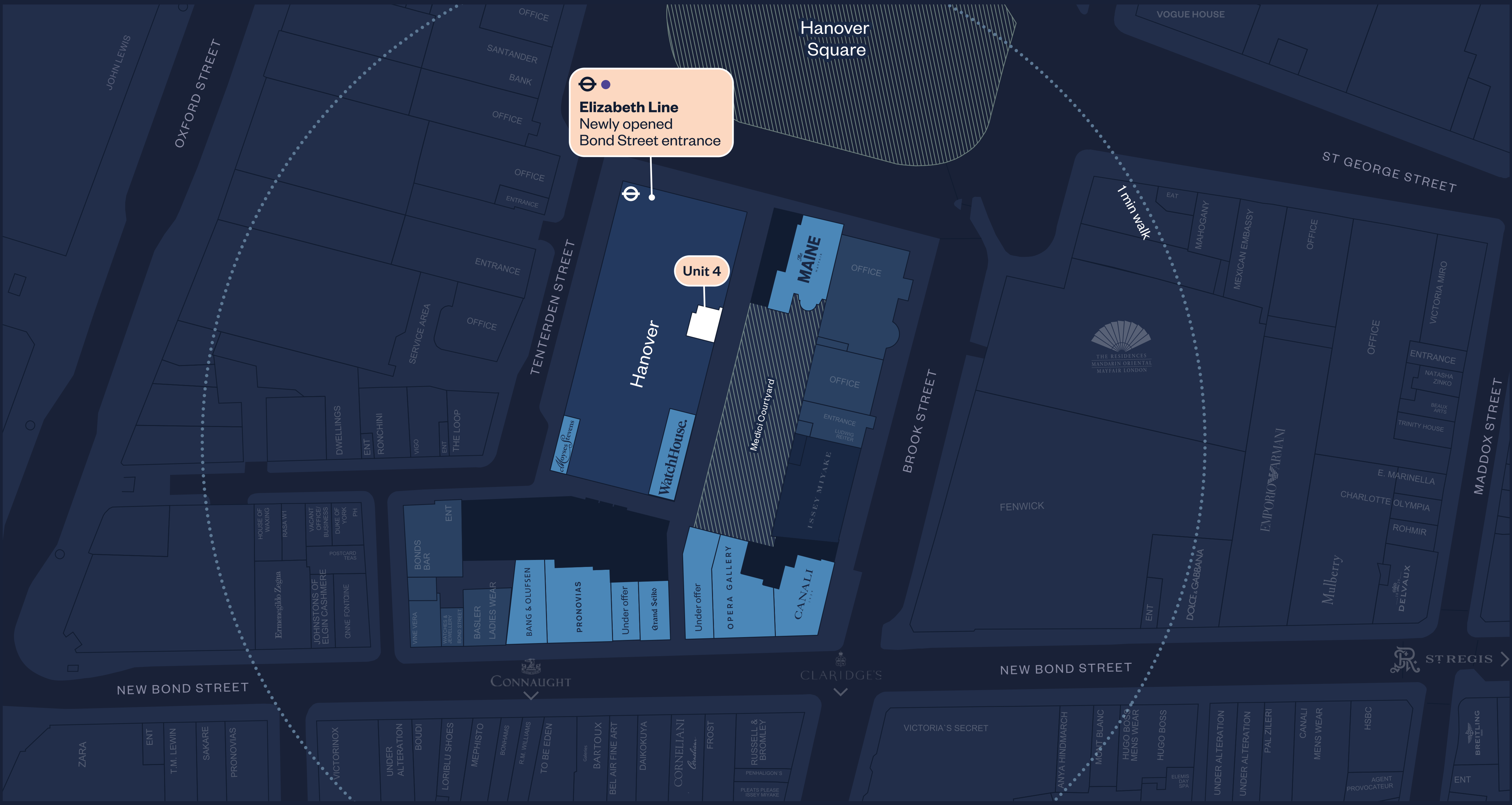
Mayfair, home to the world's most famous shopping streets, synonymous with flagship retail, chic eateries and some of London's most glamorous hotels – all drawing a global audience to the area.

Located between Hanover Square and New Bond Street is Hanover, the street's largest development – beautifully restored, combining prestige with prominence in the heart of Mayfair.

The development enjoys a high footfall, plus with the opening of the Elizabeth Line station even higher numbers are forecasted. Hanover is also home to over 1,150 employees at their fully let offices and many more from nearby offices passing through or coming to enjoy the tranquil Medici Courtyard at the centre of the development.

Elizabeth Line
Newly opened
Bond Street entrance

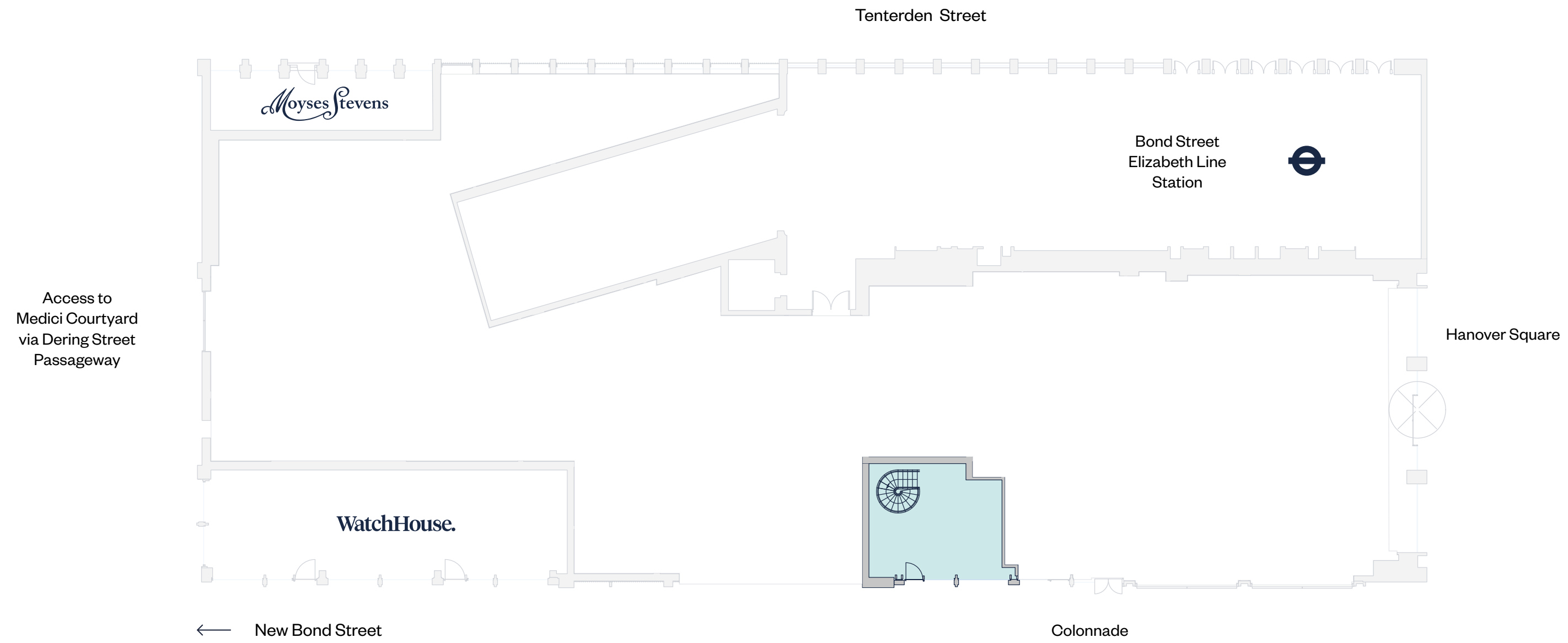
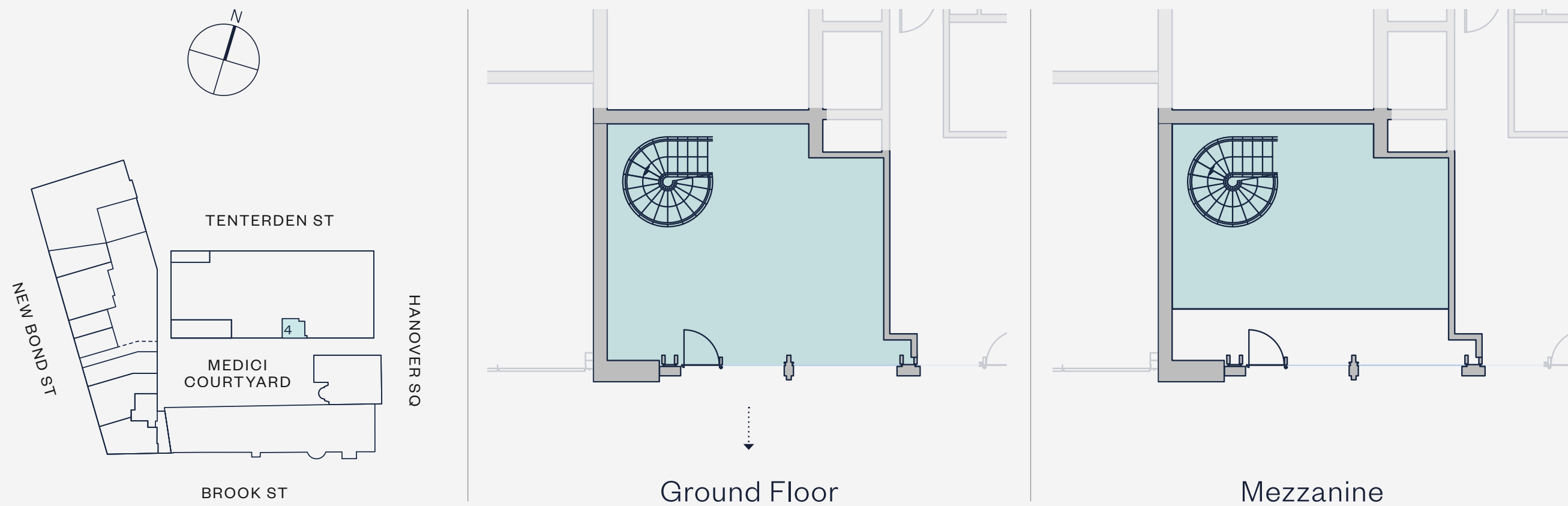
Unit 4



4 Medici Courtyard

Floor	sq ft	sq m
Ground	413	38.4
Mezzanine	280	26
Total	693	64.4

Figures shown as gross internal areas





SHELLEY SANDZER

Since 1983

Ted Schama

ted@shelleysandzer.co.uk
+44 (0) 7973 834 306

Tony Levine

tony@shelleysandzer.co.uk
+44 (0) 7828 542 573

A development by

GPE.

On behalf of
The GHS Limited Partnership

hanoverlondon.com

Important notice

All photography images are indicative only. Shelley Sandzer themselves and their client give notice that:

1. They are not authorised to make or give any representations or warranties in relation to the property either here or elsewhere, either on their own behalf or on behalf of their client or otherwise. They assume no responsibility for any statement that may be made in these particulars and as such cannot be held responsible for any loss or damage whatsoever, including without limitation, any direct, indirect or consequential loss or damage or any loss of profits resulting from direct or indirect actions based upon the content of these particulars. These particulars have been prepared in good faith and with all due care and are believed to be correct at the time of publication. However, they do not constitute any contract, part of a contract, offer representation or warranty and must not be relied upon as statements or representations of fact. **2.** Any areas, dimensions, measurements or distances are approximate. The text, images, photographs and plans are for guidance only and are not necessarily comprehensive. It should not be assumed that the property has all the necessary planning, building regulation or other consents and neither Shelley Sandzer has tested any services, equipment or facilities. Purchasers must satisfy themselves by inspection or otherwise. **3.** These particulars were prepared from preliminary plans and specifications before the completion of the properties and are intended only as a guide for the marketing of Hanover. Elements may change during construction and final finishes could vary. Prospective purchasers should not rely on this information and should ensure that their solicitor checks the plans and specification attached to their contract. April 2023.